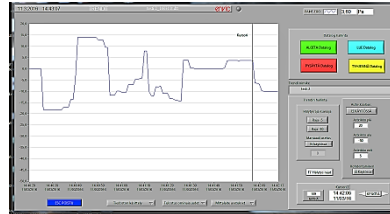


GDU-A and GDU-A/GSM DATALOGGERS **FOR MEASUREMENTS IN PRESSURE DIFFERENCES**

Because of the excellent measuring features, GDU-A datalogger is an outstanding meter/datalogger for applications where precision low pressure difference measurement and data collection is needed. GDU-A is engineered for accurate measurement in demolish of asbestos from buildings.

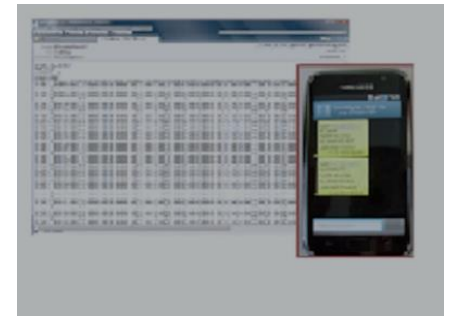
GDU - A



**SAVING THE DATA TO PC
WITH MESLOG PROGRAM**



**GPRS-MESSAGE TO
DESIRED EMAIL ADDRESS
OR DATA MONITORING
LOCALLY**



TECHNICAL DETAILS

Measurement range	-500+500 Pa, 0-point accuracy 0,2 Pa No need to zeroing or no dependency of position.
Display	Graphic display 128/64 pixels with back up light.
Memory	200 000 measurements outcomes (1,2 milj. option)
Text	12 ASCII signals
Saving	1 sec...2 h
Reading rate	1 sec...45 days
Alarm	Internal err-light, 24 VDC; 0,1 A start for external alarm flashing light
Extra equipment	Included in plastic tube (5m) for connection the measuring to the measurement point. There is also a possibility to attach external alarm light to the meter.
PC Program	Meslog D- Lite A included in delivery
Case	120 x 120 x 60 mm. plastic